



Casa Teresa
Home with a Heart

THE HEALING JOURNEY

2024 ANNUAL REPORT

OUR MISSION

To provide pregnant women in crisis a loving home to begin their healing journey.

OUR VISION

To break cycles, transform women and help families thrive through effective, caring residential programs.

THE HEALING JOURNEY...

When we say “the healing journey” what does that mean? It means the women we serve have suffered extreme trauma, often beginning in childhood. The cycle of self-medicating to ease their pain leads to addiction, which in turn fuels unhealthy behaviors.

The healing journey begins when they arrive at our doorstep, we welcome them in with love and no judgement. We help them feel safe and establish trust so they may then start working through their trauma and healing can take place.

It is through your generous gifts of time, talent, and/or treasure that we are able to do our life-changing work at

Casa Teresa. On behalf of the Board of Directors, staff, moms, children and babies, we express our deepest gratitude for your support in their healing journey.



Lisa Wood

LISA WOOD
Chief Executive Officer

97 WOMEN

48 BABIES

24 CHILDREN

262 ALUMNI

OUR PEOPLE

BOARD OF DIRECTORS FY 2023 - 2024

PAUL ALARCON

Partner, Bowman and Brooke

REBECCA ANDERSON

Realtor, Surterre Properties

HEATHER AYALA, MS, RD

Registered Dietitian

SHAUN BLACK, Secretary

Owner, PIVOTL

DREW BORDAGES, Vice Chair

SVP General Counsel,
ZO Skin Health

ANDREW BRAMBLETT

Quantitative Research Analyst,
PIMCO

JEANNIE BRESNEN

Partner, Mercer

SETH BRINDIS, MD

ER Pediatrician,
CHOC Children's Hospital

CYNTHIA CAMPOS

Director, Planned Giving
Providence Mission Hospital

ANDREA FLETCHER

Vendor Management Specialist,
Schools First Credit Union

KEN HART

Chief Executive Officer,
Aquatic Technologies

ADRIANA HERNANDEZ

Program Director, American Career
College Education Foundation

JINNY LEE

VP of Marketing & Strategy,
Edwards Lifesciences

RICARDO LEON

Associate Commercial Banker,
JP Morgan Chase

JENNIFER MACMATH-BROWN, Chair

SVP, Senior Treasury Solutions Officer,
Bank of America Merrill Lynch

SHANNON POZZUOLI, MFT

Community Leader & Philanthropist

ANIL PURI, Treasurer

Provost Emeritus,
Cal State Fullerton

MARGARET SULLIVAN

Chief Executive Officer,
Sullivan Strategy

NEILL SULLIVAN, JR.

Founder and CEO,
REO Homes and Sullivan
Management

TIM SULLIVAN

Franchiser, Worldwide Express

BREAKING THE CYCLE, MAKING AN IMPACT

BEFORE CASA TERESA, MANY OF THE WOMEN:

- Come from unhealthy living situations or have been chronically homeless
- Have struggled with drug or alcohol use
- Have been physically, sexually and/or emotionally abused
- Are estranged from their parents and other family members
- In need of their high school diploma or equivalent
- In need of prenatal care
- Unable to navigate/receive mental health resources
- Have experienced trauma

BACKGROUND: *(cumulative across all programs)*

62% FROM FOSTER CARE

A horizontal bar chart with a purple bar representing 62% and a lighter purple bar representing the remaining 38%. The text "62% FROM FOSTER CARE" is overlaid on the purple bar.

98% SUBSTANCE ABUSE

A horizontal bar chart with a purple bar representing 98% and a very light purple bar representing the remaining 2%. The text "98% SUBSTANCE ABUSE" is overlaid on the purple bar.

100% EXPERIENCED TRAUMA IN CHILDHOOD

A horizontal bar chart with a solid purple bar representing 100%. The text "100% EXPERIENCED TRAUMA IN CHILDHOOD" is overlaid on the bar.

93% DOMESTIC VIOLENCE

A horizontal bar chart with a purple bar representing 93% and a light purple bar representing the remaining 7%. The text "93% DOMESTIC VIOLENCE" is overlaid on the purple bar.

61% HUMAN TRAFFICKING SURVIVORS

A horizontal bar chart with a purple bar representing 61% and a light purple bar representing the remaining 39%. The text "61% HUMAN TRAFFICKING SURVIVORS" is overlaid on the purple bar.

82% HAVE MENTAL HEALTH CONCERNS

A horizontal bar chart with a purple bar representing 82% and a light purple bar representing the remaining 18%. The text "82% HAVE MENTAL HEALTH CONCERNS" is overlaid on the purple bar.

AFTER CASA TERESA, THE WOMEN AND/OR BABIES:

- Leave with a stable place to live
- Are educated in parenting skills and child development
- Have the tools to develop healthy relationships
- Are reunified with families and older children in a healthy way
- Have earned their high school diploma or passed the high school equivalency test (HSE)
- Babies have been immunized
- Have criminal record expunged or sealed
- Connected to community resources

A STORY OF IMPACT: **SHARON'S STORY**

Growing up, children are not always taught the importance of stability, how to love yourself, how to nurture or care for others. The importance of peace and responsibility. When I got pregnant, I just moved back to California from out of state, I had no support and nowhere to go, but I found Casa Teresa.

I entered into the Parenting Program and it was a hard transition because I wasn't used to love, structure and support. I was met with so many of the things I lacked. I was taught the importance of being healthy, having stability, the need for higher education and a strong work ethic. I received so much support from the staff and volunteers.



I was able to take care of myself and my unborn child, I was provided with counseling, case management, group therapy, Bible studies and many other classes. Nurse Kerri taught healthy living for us and our babies. When I had Jaydon, I was met with so much love. I remember coming home from the hospital and a layette was waiting in my room full of baby things, so I didn't have to worry about anything. As a first-time mom everything was new to me. Staff were there to hold the baby when I was tired and Nurse Kerri made sure me and my baby were healthy.

When I moved into the Transformation 1 (T1) Program, I was able to go back to school and start working. I felt

such a sense of accomplishment and confidence in T1 we were given more freedom while never losing any of the support. The ability to continue growing at Casa Teresa was so amazing.

When I moved to Transformation 2 (T2) and into my own apartment (onsite), I gained more self-sufficiency while still receiving all the support and love given to me. When I graduated from the T2 program, I moved into my own apartment and was still connected to Casa Teresa through Bible studies and reunions. If I needed food, clothing and furniture, the staff at Casa Teresa was there for me.

My "Casa Baby" Jaydon graduated High School in 2024 as an Honorable Seal Bear from the State of California with a 4.0 GPA and a first-generation graduate...all the glory to the Lord!

I believe without the support, love and care from Casa Teresa that shaped me into who I am today – ours would have been a very different story. I am self-sufficient, taking care of my three children on my own.

To the selfless donors supporting women like me - you may feel like what you do is small but to the ones you are doing it for, it is the whole world. It is life changing and I am forever thankful.



THE GIFT OF VOLUNTEERING



BABYSITTING

We regularly need volunteers to provide weekly babysitting as well as occasional childcare for special outings. For the protection of the children and babies that we serve, all babysitting volunteers are required to undergo interviews and live scans.



SORTING

We are so fortunate to receive significant amounts of clothing donations for our program as well as our resale store, The Collection by Casa Teresa. Sorting these donations is an excellent opportunity for corporate and volunteer groups.



TEACH A CLASS

Volunteers play a vital role in providing educational support to our residents through teaching classes and tutoring.



SERVE A MEAL

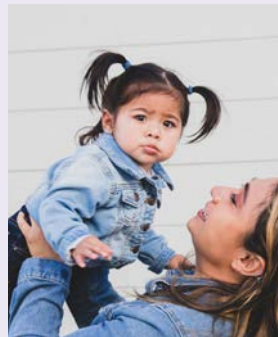
Volunteer groups are welcome to provide and serve meals directly to the women in our program, offering a valuable opportunity for connection and support including holding babies!

PROGRAMS WITH PURPOSE



EMS / PARENTING PROGRAM

Women come into the Emergency Maternity Shelter (EMS) or Parenting Program pregnant. In those programs, they receive case management, wraparound resources, education and learn other skills to promote self-sufficiency. Women in these programs stay until 2 months post birth.



TRANSFORMATION PROGRAM

During the two phases of Transition, women pursue education or employment while their baby goes to daycare. They attend Bible study, parenting classes and regular meetings with their case manager, further developing their independence and self-reliance.



BRIDGE PROGRAM

Our Bridge Program is a long-term rental assistance initiative designed to support women who have been at Casa Teresa. This philanthropically funded program allows a woman and her child the opportunity to move into an affordable apartment with financial support, case management, and structured plan with milestones help ensure their continued success.



ALUMNI PROGRAM

Our Alumni Program provides ongoing support for former residents who may be in need of diapers, food, gas cards, clothing and more. We also host a variety of alumni events to help women and children stay connected to the Casa Teresa community.

THANK YOU TO OUR EVENT SUPPORTERS

2023 DENIM & DIAMONDS GALA

PLATINUM SPONSOR
Regina Hunsaker

DIAMOND SPONSORS
Heather and Arees Akoubian

American Career College
and West Coast University
Frome Family Foundation

Ken and Holly Hart

Rick and Karen Julian,
Advanced Real Estate

Lisa Karos, Coldwell Banker
Realty

Jack and Donna McNutt

Diane and Andy Peykoff, Sr.

Neill Sullivan and LaJon
Survillion

GOLD SPONSORS

Don and Sue Redfern

Tim and Susan Strader

UNDERWRITERS

Christine Arakawa

Jean and Joe Cornyn

Ken and Holly Hart

Amy Kramer

Steve and Cathy Muzzy

John and Lori Stanton



Alumna Marcela (L) and philanthropist Patricia Shiley Magana (R) enjoy the gala.

2024 DREAM BIG FASHION SHOW

PRESENTING SPONSORS

Jeanna Shiley

Patricia Shiley Magana

Rebecca Shiley

AMORE! SPONSORS

Frome Family Foundation

Diane and Andy Peykoff, Sr.

Kim and Steve Rodosky

BACIAMII! SPONSORS

Beacon Pointe and the
Eusey Family

Meg De Koning & Mary Tollner

Regina Hunsaker

Lisa Karos, Coldwell Banker
Realty

UNDERWRITERS

Adopt a Highway
Maintenance Corporation

Rebecca Anderson,
Surterre Properties

Cathie and Mike Lawler

The McGuinness Family



Co-chairs Rebecca Anderson (L) and Samantha Morin (R) strike a pose at the luncheon.

12 SPONSORS

210 ATTENDEES

30 MODELS

\$246K RAISED (NET)

12 COMMITTEE MEMBERS

\$222K RAISED (NET)

15 COMMITTEE MEMBERS

350 ATTENDEES

44TH NEILL SULLIVAN LEGACY GOLF CLASSIC

TITLE SPONSOR

The Redfern Family

PLATINUM SPONSORS

Bill and Judi Leonard

Steve and Cathy Muzzy

GOLD SPONSOR

Jeff Showalter

SILVER SPONSORS

American Career College and
West Coast University

Birtcher Anderson & Davis

Chase Bank

Frome Family Foundation

Sylvia Michler and Dennis Noren

RJ Noble Company

The Winters Family



Title Sponsor Don Redfern (center) with sons Pat (R) and Tim (L).

144 GOLFERS

6 COMMITTEE MEMBERS

\$172K RAISED (NET)



SAVE THE DATE FOR OUR 2024/25 EVENTS!

GALA
October 4, 2024

LUNCHEON
March 21, 2025

GOLF CLASSIC
June 3, 2025

OUR FINANCIAL STRENGTH

We are grateful each year for the incredible financial support from hundreds of supporters, foundations, churches and companies.

ASSETS

CASH & CASH EQUIVALENTS	\$2,941,500
INVESTMENTS	\$1,258,927
ACCOUNTS RECEIVABLE	\$11,639
PREPAID EXPENSE	\$120,421
OTHER CURRENT ASSETS	\$10,193
TOTAL CURRENT ASSETS	\$4,342,680
PROPERTY, PLANT, AND EQUIPMENT, NET	\$2,575,212
TOTAL ASSETS	\$6,917,892

LIABILITIES

CURRENT LIABILITIES	\$ 270,595
LONG-TERM LIABILITIES	\$1,035,325
TOTAL LIABILITIES	\$1,305,920

NET ASSETS

NET ASSETS WITH DONOR RESTRICTIONS	\$79,241
NET ASSETS WITHOUT DONOR RESTRICTIONS	\$5,532,731
TOTAL NET ASSETS	\$5,611,972
TOTAL LIABILITIES AND NET ASSETS	\$6,917,892

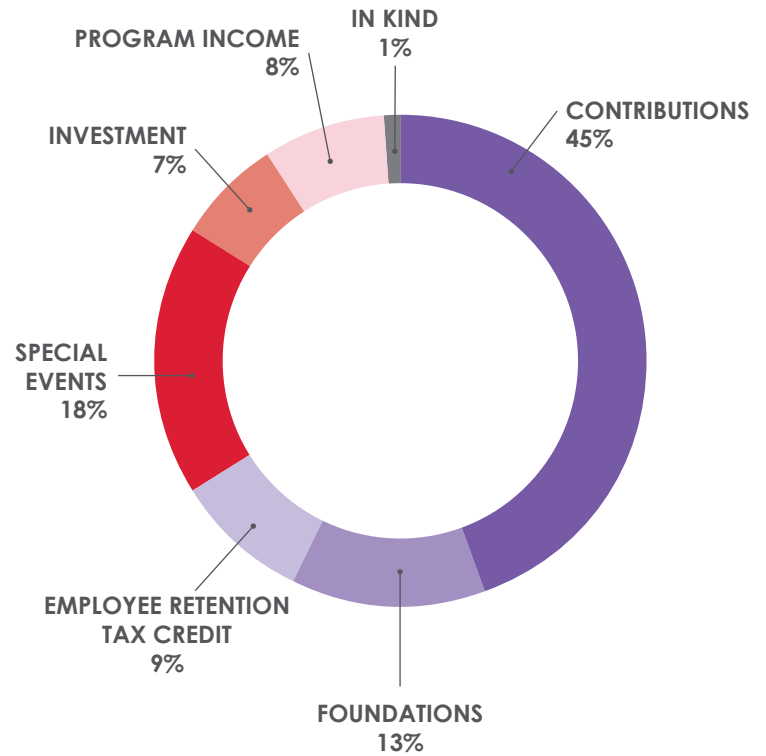
REVENUE

CONTRIBUTIONS	\$1,851,663	45%
FOUNDATIONS - GRANTS	\$528,000	13%
EMPLOYEE RETENTION TAX CREDIT	\$356,159	9%
SPECIAL EVENTS	\$735,052	18%
INVESTMENT	\$285,735	7%
OTHER INCOME	—	0%
PROGRAM INCOME	\$317,154	8%
IN-KIND	\$29,835	1%
TOTAL REVENUE	\$4,103,598	100%

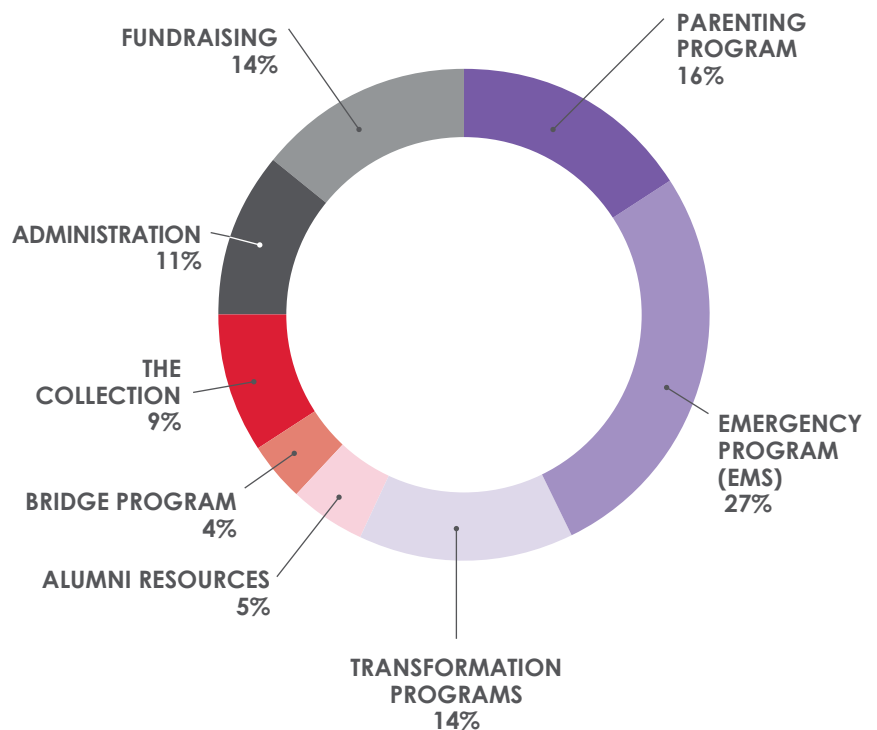
EXPENSES

HANNAH'S HOUSE	\$13,388	0%
PARENTING	\$534,435	16%
EMS	\$929,836	27%
TRANSFORMATION PROGRAMS	\$483,591	14%
ALUMNI RESOURCES	\$174,322	5%
BRIDGE PROGRAM	\$148,463	4%
THE COLLECTION	\$309,635	9%
ADMINISTRATION	\$365,582	11%
FUNDRAISING	\$466,730	14%
TOTAL EXPENSES	\$3,425,982	100%

TOTAL REVENUE \$4,103,598



TOTAL EXPENSES \$3,425,982



CASA TERESA

P.O. BOX 429, ORANGE, CA 92856

PHONE: (714) 538-4860 • FAX: (714) 744-6409

WWW.CASATERESA.ORG

STAY CONNECTED, STAY INFORMED



/CasaTeresaOC



@CasaTeresa



@CasaTeresaOC



/CasaTeresa